



GE Fanuc Automation

VisualSPC™

OVERVIEW

To achieve the highest in quality you need to be able to readily gather your manufacturing data and organize it effectively. That's where the VisualSPC™ family of data collection software shines. As a company devoted to the Six Sigma approach to quality improvement, we understand that collecting accurate, timely data is the cornerstone of consistently high quality. And with 20 years of experience on the shop floor and in-depth application knowledge spanning a score of industries, we understand the real-world challenges that must be overcome to streamline the data collection process.

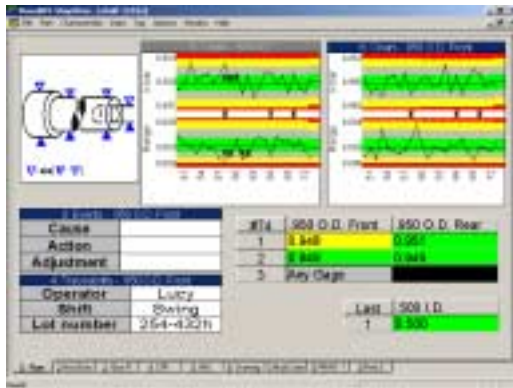


PRODUCT FEATURES

This knowledge has shaped every feature of VisualSPC. Developed originally by GageTalker, the VisualSPC software suite is a complete Windows®-based approach to collecting, monitoring, and analyzing plant floor quality data. In addition to being extremely easy to use, VisualSPC is outstanding for its flexibility. This open software suite is easily customized without any programming, giving you the ability to match your data gathering system to your plant-floor processes. With VisualSPC, you control the process of translating enterprise-wide data into decision critical information.



Gather Data from Virtually Any Available Source. In addition to accommodating keyboard entry, VisualSPC capitalizes on GE Fanuc's leadership in Open Connectivity—you can connect to hundreds of gaging devices using the GagePort™ family of interface modules, import files directly from CMMs and other intelligent devices, harvest data from portable data collectors, and synchronize easily with our Zipper™ hand-held data collector. Equally important, VisualSPC offers OPC connectivity to intelligent controllers, software applications, specialty gaging devices and a wide array of industrial communication networks and I/O systems.

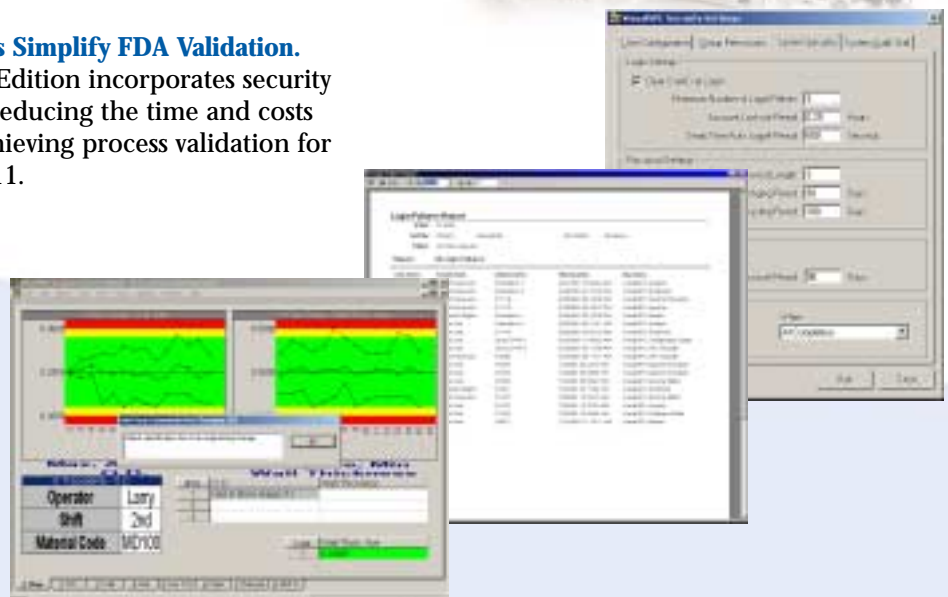


Create the Operator Interface That Works Best for You. With VisualSPC, you can easily arrange your screens the way that makes it easiest for operators to collect and evaluate your data, using OLE to integrate your own graphics and text, incorporating selected statistical calculations and color coding information. By organizing screens that meet your needs, you can dramatically reduce operator training and implementation time.

Maximize Your Existing Investment. VisualSPC is an exceptionally open product. It integrates smoothly with all major hardware and software devices found on the plant floor and integrates seamlessly into your existing networking architecture. As a result, you can incorporate VisualSPC without adjusting or compromising manufacturing processes perfected over the years.

Meet Critical Regulations and Customer Requirements. VisualSPC is a crucial tool that can drive up product quality, while reducing scrap, rework, and repairs. At the same time, it can provide the documentation you need to meet stringent government regulations or customer requirements.

Powerful Solutions Simplify FDA Validation. VisualSPC Secure Edition incorporates security features ideal for reducing the time and costs associated with achieving process validation for FDA 21 CFR Part 11.



Control the Way You Collect, Organize, and Analyze Your Data.

The VisualSPC family of data collection software includes:

- VisualSPC ShopFloor™
- VisualSPC Measurement System Analysis™
- VisualSPC Attributes™
- VisualSPC Importer™
- VisualSPC Monitor™
- VisualSPC Analyst™
- VisualSPC Wizard™
- VisualSPC Designer™

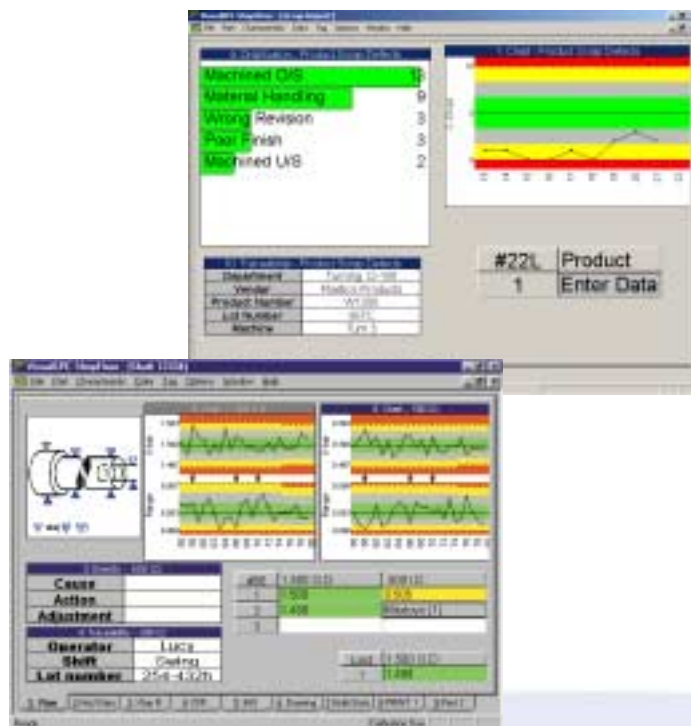
* Available in both standard VisualSPC and VisualSPC Secure Edition.

Collect Data Easily

At GE Fanuc, our insight into the actual challenges our customers face in collecting data is reflected in every aspect of VisualSPC ShopFloor. This element of our VisualSPC suite is designed not merely to accommodate the gathering of data, but to enhance it.

With VisualSPC you can:

- Select the data you want to collect and organize custom screens to reflect operator skills and plant floor characteristics with VisualSPC Designer.
- Accommodate a wide variety of gages and measuring devices through our industry-standard GagePort technology.
- Use the Zipper hand-held data collector to collect data and automatically transfer the information into our standard database.
- Import files generated by CMMs and other measuring systems directly into a standard database using VisualSPC Importer.
- Access information residing on other devices and applications, via our OPC connectivity.
- Evaluate variations in your measuring system using VisualSPC MSA.
- Track multiple categories of attribute data with VisualSPC Attributes.



Monitor Information in Real-Time

Get an overall picture of active production floor processes from any PC on your network. VisualSPC Monitor will search multiple databases for the data you specify and present it in the form that is most useful to you. Process changes and problems are pinpointed instantly, allowing operators to adjust processes or enlist assistance.

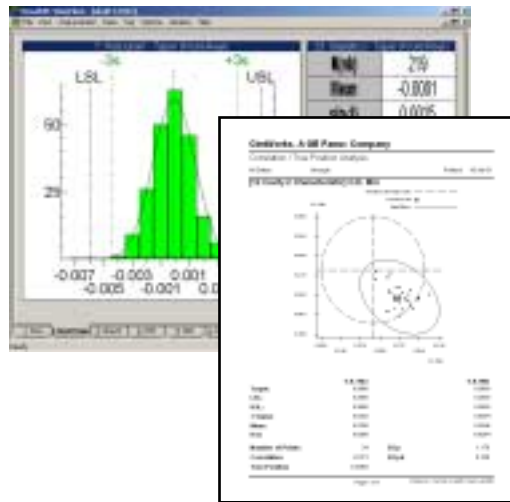


With VisualSPC you can:

- View and control your processes in real-time from anywhere on your network or on the Internet using Internet Explorer.
- Generate e-mails on the basis of alarms and other events.
- Mine your process data using drill-down analysis to determine the root cause of process variation.

Apply Powerful Analytic Tools

VisualSPC Analyst gives you the ability to apply a wide range of sophisticated statistical analysis strategies to your data. In fact, many other business tools may have links to this reliable program. You can also export your data into such industry-standard programs as Excel, Access, or MiniTab.



With VisualSPC you can:

- Enhance enterprise connectivity through seamless integration with SQL Server™ or Oracle® thanks to VisualSPC's support for ODBC standards.
- Generate standardized reports using VisualSPC Reports or easily create customized reports for your needs.

© 2001 GE Fanuc Automation North America, Inc. All Rights Reserved.
 VisualSPC, GagePort, Zipper, VSPC ShopFloor, VSPC Measurement System Analysis, VSPC Attributes, VSPC Importer, VSPC Monitor, VSPC Analyst, VSPC Wizard, and VSPC Designer are trademarks of GE Fanuc Automation North America, Inc. Windows is a registered trademark of Microsoft Corporation. All other trademarks are property of their respective owners.

ADDITIONAL RESOURCES

www.cimworks.com



GE Fanuc Automation

GE Fanuc Automation Information Centers

USA and Canada 1-800-648-2001

Europe and Middle East (352) 727979-1

Asia Pacific 65-566-4918

Latin America (610) 437-7932

Mexico 1-800-989-124